

N4 Collooney to Castlebaldwin, *Proposed Road Development*

APPENDIX NO. 15.7

Cultural Heritage Plates

PREPARED BY:

Archaeological Development Services;



Document Control

Status	Issued For	Developed	Date	Approved
<i>FINAL</i>	<i>Publication</i>	<i>EOC</i>	<i>December 2013</i>	<i>JW</i>

Plate 1 *CHC 01 – Townland boundary between Collooney and Toberbride Tds.*



Plate 2 *CHC 02 – Recorded Monument SL026-026 (Holy Well, Souterrain, Ringfort, Ecclesiastical remains), Toberbride Td*



Plate 3 *CHC 04 – Recorded Monument SL026-164 (Enclosure, possible), Toberbride Td with CHC 03 and 05 in the background*



Plate 4 *CHC 07 – Townland boundary between Toberbride & Mullaghnabreena Tds*



Plate 5 *CHC 09 – early 19th century structures, Toberscanavan village, Mullaghnabreena Td*



Plate 6 *CHC 10 – Protected structure 'Toberscanavan House' Draft RPS 214, Mullaghnabreena Td*



Plate 7 *CHC 12 Site of mill and Fair Green in Ardcurley Td at proposed pond c. Ch. 1,100*



Plate 8 *CHC 13 – early 19th century structures, Ardcurley Td*



Plate 9 *CHC 14 – Townland boundary as stream, Mullaghnabreena & Ardcurley Tds with modern well in foreground*



Plate 10 *Modern well in Cloonamahan townland*



Plate 11 *CHC 16 – Townland boundary, Cloonamahan & Ardcurley Tds*



Plate 12 *CHC 17 – Wetland, Cloonamahan Td*



Plate 13 CHC 18 – early 19th century structures, Ardcurley Td



Plate 14 CHC 19 – 20th century roadside memorial, Cloonamahan Td



Plate 15 CHC 20 – Gateway with stone piers, Ardcurley Td



Plate 16 CHC 22 – Gateway with stone piers, Ardcurley Td



Plate 17 CHC 22 – Gateway with stone piers, Ardcurley Td with location of proposed pond at c. Ch. 2,100



Plate 18 CHC 23 – in background is recorded monument SL026-077 (Ringfort), Cloonamahan Td



Plate 19 CHC 24 – early 19th century structure, Cloonamahan Td



Plate 20 CHC 25 – Townland boundary between Cloonamahan and Doorly Tds



Plate 21 CHC 27 – Stone walls (possible gateway or structure), Doorly Td



Plate 22 *CHC 29 – early 20th century structure, Doorly Td*



Plate 23 *CHC 30 – early 20th century structure, Doorly Td*



Plate 24 *Gravel extraction pit, Doorly Td*



Plate 25 *CHC 32 – 19th/20th century structure, Doorly Td*



Plate 26 *CHC 34 – Flat topped bank (old routeway) Doorly Td*



Plate 27 *CHC 35 – Enclosure, possible from aerial photograph, Doorly Td*

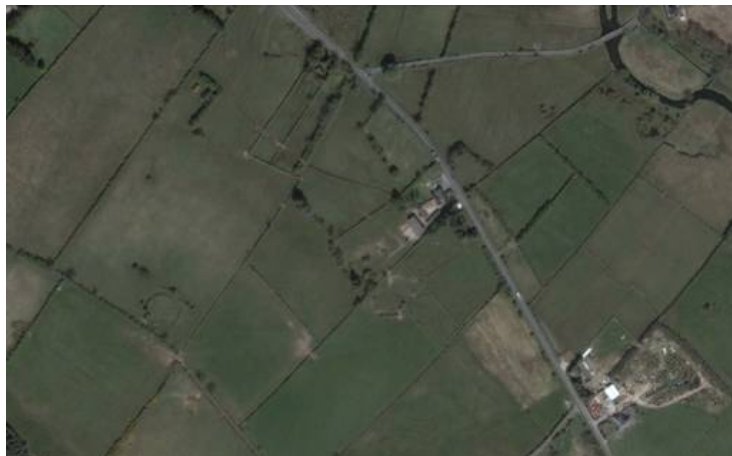


Plate 28 CHC 36 – Wetland, Doorly & Knocknagroagh Tds



CHC 37 – Townland boundary as stream between Doorly & Knocknagroagh Tds

Plate 29 CHC 36 – Wetland, Doorly & Knocknagroagh Tds



Plate 30 CHC 38- 19th century structure 'school', Knocknagroagh Td.



Plate 31 *Site of former structure CHC 39.*



Plate 32 *CHC 43 – Wetland, Knocknagroagh Td. Proposed pond location at c. Ch. 4,150-4,300m.*



Plate 33 *CHC 45 – Wetland, Drumfin Td, view to Bricklieve Mountains in background*



Plate 34 *CHC 45 ponds Ch. 4900, looking west.*



Plate 35 *CHC 45 Spoil Repository area SR/BP Type 02-No.1 and SR-LI-01.*



Plate 36 *CHC 45 Spoil Repository area SR/BP Type 02-No.2 and SR-LI-02.*



Plate 37 *CHC 46 Stone-lined culvert, Drumfin Td.*



Plate 38 *CHC 47 – early 19th.century structure, Drumfin Td*



Plate 39 *CHC 48 – Townland boundary as stream between Drumfin and Cloonlurg Tds.*



Plate 40 *CHC 49– in midground Wetland, Carrownagark Td, in background conifer Plantation. Location of Spoil Repositories SR-LI-03 and SR-LI-04*



Plate 41 CHC 49 at south end of ponds at c. CH. 6,380-6,590m.



Plate 42 CHC 51 – Linear banks (old laneway and field boundary), Carrownagark Td



Plate 43 *CHC 52 at link road, looking northeast.*



Plate 44 CHC 52 – Townland boundary between Kingsbrook and Carrownagark Tds



Plate 45 Coppiced hawthorn and whitethorn field boundaries, Kingsbrook Td



Plate 46 CHC 54 stone gate in Carrownagark Td.



Plate 47 CHC 55 – Portion of old field boundary, Kingsbrook Td



Plate 48 CHC 56 – Wetland with Cuilleencroobagh Lough in midground, Kingsbrook & Carrownagark Tds



Plate 49 CHC 56 –Location of pond at c. Ch 8,800m, looking south.



Plate 50 View from existing N4 of Kingsbrook and Carrownagark Tds (proposed route passes along near base of slope)



Plate 51 CHC 57 – early 19th century structure, Kingsbrook Td



Plate 52 *Location of link road to northwest of L-54033-0.*



Plate 53 CHC 58 – Site of historic laneway and proposed ponds at c. Ch. 9,330-9,450m in Kingsbrook, looking northwest.



Plate 54 CHC 59 – Wetland, with view of Aghalenane Lough, Kingsbrook Td



Plate 55 CHC 60 – Townland boundary between Kingsbrook and Aghalenane Tds



Plate 56 View of proposed pond at Aghalenane Lough, looking southeast. CHC 62 wetland area in the background



Plate 57 CHC 66 – Townland boundary between Ardloy and Springfield Td



Plate 58

SL034-088 in foreground with Spoil Repository Area (SR/BP Type 01-No.1) in background



Plate 59

CHC 68 – Wetland, Springfield Td



Plate 60

View from hillside in Tawnagh Td, of wetland (CHC 68) at the proposed pond at c. CH. 10,590-10,700m and 19th/20th century structure (CHC 69) in Springfield Td



Plate 61

CHC 72 – Possible enclosure site from aerial photograph, Tawnagh Td with location of Spoil Repository SR/BP Type 01-No.2 in the right background



Plate 62

CHC 72 – Possible enclosure site from aerial photograph, Tawnagh Td



Plate 63

CHC 73 – Townland boundary between Cloonymeenaghan and Tawnagh Td



Plate 64 *CHC 74 – Probable site of early road, portion in direct line of route, Tawnagh Td in the vicinity of Spoil Repository SR/BP Type 01-No. 3*



Plate 65 CHC 74 – Early road, portion immediately northeast of route, Tawnagh



Plate 66 CHC 75– Recorded monument SL034-112 (Ringfort), Tawnagh Td



Plate 67 *Spoil Repository Area SR/BP Type 02-No.03 in Cloonymeeghan Td.*



Plate 68 CHC 77 – Potential enclosure site, Cloonymeenaghan Td, with CHC 78 in the background, with view towards Bricklieve Mountains and Carrowkeel Cemetery



Plate 69 CHC 80 – Townland boundary between Sheerevagh and Drumderry Tds



Plate 70

CHC 81 – early-mid 19th century structure, Drumderry Td



Plate 71

CHC 82 – Wetland, Drumderry Td and the site of the proposed pond at c. Ch.12,400m



Plate 72

Spoil Repository Area SR/BP Type 01-No.04 in the middleground



Plate 73 *Gravel extraction pit, Drumderry Td*



Plate 74 *CHC 83 – Stone wall field boundary, Drumderry Td*



Plate 75 *CHC 84 – early 19th century structure, Drumderry Td*



Plate 76 *Location of proposed link road in Annaghcor, looking northwest., site of CHC 85*



Plate 77 *Landscape mitigation area LS. Mit. 01 from north showing CHC 88 and CHC 89*



Plate 78 CHC 90 – Townland boundary between Drumderry and Ballanagarrigeeny/Castlebaldwin Tds, with view to Bricklieve Mountains and Carrowkeel Cemetery



Plate 79 *CHC 90 – Townland boundary looking north at location of link road.*



Plate 80 *CHC 90 – Townland boundary at location of proposed roundabout.*



Plate 81 Landscape mitigation area LS. Mit. -02 from northwest showing townland boundaries CHC 90 & 92.



Plate 82 *CHC 91 – Protected structure ‘Former Castlebaldwin National School’, Draft RPS 84, Cloghoge Upper Td*



Plate 83 *CHC 93 – Recorded monument SL034-181 (Ringfort), Bellanagarrigeeny/Castlebaldwin Td*



Plate 84 *CHC 97 – Former 20th century Creamery, Cloghoge Upper Td*



Plate 85

CHC 98 – Recorded monument SL034-184 (Ringfort), Bellanagarrigeeny/Castlebaldwin Td



Plate 86

CHC 89 – Wetland in Cloghoge Upper & Ballanagarrigeeny/Castlebaldwin Tds, with 17th century house 'Castlebaldwin' (SL034-185, CHC 99) in background



Plate 87

CHC 96 – Recorded monument SL034-186 (Holy well site), Cloghoge Upper Td



Plate 88 *CHC 92 – Townland boundary as stream between Cloghoge Upper and Bellanagarrigeeny/Castlebaldwin Tds*



Plate 89 *CHC 100 – Recorded monument SL034-191 (enclosure) within townland boundary between Cloghoge Upper and Cloghoge Lower Tds CHC 101*



Plate 90 *View from Carrowkeel Cemetery from Cairn K facing northeast, past Cairns H and G towards Castlebaldwin village*



Plate 91

View from Carrowkeel Cemetery facing northeast towards Castlebaldwin village

